



NATURAL GAS POTENTIAL

Promotional areas available for Technical Evaluation Agreements (TEA) or License Contracts for Hydrocarbons Exploration.

AREAS FOR

EXPLORATION



Overview

In this brochure, PERUPETRO shows the promotional areas with the highest natural gas potential in three different sedimentary basins, which have important prospects. These areas can be granted to interested companies as License Contracts or as Technical Evaluation Agreements.

However, we continue with the “open acreage” policy whereby interested companies can propose other available areas of interest.

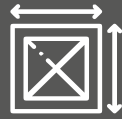
At the same time, PERUPETRO has been aligning efforts with the different sectors involved in the development of the industry, to reactivate production and generate conditions for the development of important ongoing projects, mainly in the Peruvian offshore, where expectations are promising.

Contents

01	●	Introduction
02	●	Macroeconomic context
03	●	Promotional areas with the highest gas potential
		Blocks Map
		Available Data
		Prospective Resources
		Basin Characteristics
		Ucayali Basin
		Madre de Dios Basin
		Huallaga Basin
04	●	Contact us



Population:
34.4 million



Area: 1,29
million km²



Rural: 23%



Urban: 77%



PERUPETRO

Who are we?

PERUPETRO S.A. is the State Company, which in representation of the Peruvian State, is in charge of promoting, negotiating, subscribing, and supervising contracts for the exploration and exploitation of hydrocarbons in Peru.

Introduction

Peru has an open door policy towards international oil companies, and besides a prospective geology, Peru offers an excellent working climate and very friendly terms. All exploration and production activities involving upstream oil and natural gas are carried out by companies who sign contracts with PERUPETRO on behalf of the Peruvian State, and technical information includes extensive geophysical seismic surveys, as well as a number of technical evaluations and geological field studies that help to determine the areas with hydrocarbon potential in an underexplored country, with 98% of exploratory wells concentrated in 5 of the 18 basins.



Economic Context

Peru has demonstrated economic resilience over the past decade, with steady growth in both primary and non-primary sectors. After a sharp contraction in 2020 due to the pandemic (-10.9% of GDP), the country experienced a rapid recovery in 2021 (13.4%). Although growth slowed in 2022 (2.7%) and saw a slight contraction in 2023 (-0.6%), a recovery of 3.1% is expected for 2024 and 3.0% for 2025, driven by a rebound in private investment, increased consumption, and political stability. Additionally, Peru is advancing in its OECD accession process, reinforcing its commitment to international standards and attracting more foreign investment.



Oil & Gas Sector

Peru's oil and gas sector has undergone significant transformation, shifting from state control to becoming a key driver of economic growth. The creation of PERUPETRO in the 1990s, responsible for managing hydrocarbon contracts, attracted private investment and revitalized the sector with projects like the Camisea gas field development. Today, Peru is a net exporter of liquefied natural gas (LNG) and continues to expand its energy matrix. The sector now benefits from a stable legal framework that includes license and service contracts, ensuring investor rights and tax stability.



Investment in the Hydrocarbon Sector

PERUPETRO S.A., representing the Government of Peru, manages contracts for the exploration and exploitation of hydrocarbons, offering modalities such as license and service contracts with terms of up to 30 years for oil and 40 years for natural gas. These contracts provide legal and fiscal stability for investors. By 2025, significant growth in oil and gas production is projected, supported by projects like the Talara refinery modernization and new wells in lot 95, reinforcing Peru's position as an attractive destination for energy sector investments.



Social Fund

A Social Fund has been established for new contracts, allowing local populations to directly benefit from the hydrocarbon sector. This fund, financed by a percentage of production, supports community-prioritized development projects within the contract area. It operates under a private trust, guided by principles of good faith, transparency, and efficiency. Its main goals are to reduce development gaps, improve living conditions, and foster socially sustainable conditions for hydrocarbon activities in Peru.

Macroeconomic context

Peru's economy in 2024 has shown resilience amid global and local challenges.

According to the Central Reserve Bank of Peru's (BCRP) September 2024 Inflation Report, the performance of key sectors like metal mining and hydrocarbons has been mixed:

- **Metal Mining:** the sector contracted by 3.4% in Q2 2024, mainly due to lower copper (-7.1%) and zinc (-20.7%) production. However, this was partially offset by a 4.8% rise in gold output, driven by higher extraction at major mines, and a remarkable 27.7% surge in molybdenum production, reflecting intensified production efforts. Growth forecasts for the sector have been adjusted to 1.2% in 2024, with a recovery to 1.9% expected in 2025, supported by improved ore grades and optimized production plans.
- **Hydrocarbons:** this sector saw a 2.9% decline in Q2 2024, primarily due to reduced natural gas extraction and lower oil yields. However, growth projections have been revised upwards to 3.7% in 2024 and 7.1% in 2025, driven by increased activity in block 95, where new wells are expected to boost output.

Looking ahead, Peru's overall economic growth is forecasted at 3.0% in 2025, supported by a combination of primary and non-primary sectors. The Perupetro Strategic Plan 2022-2026 aims to increase oil production to 107,000 BPD and natural gas output to 1,927 MMSCFD, alongside ongoing investments in infrastructure, such as the Talara refinery optimization. These initiatives reflect Peru's commitment to aligning with its National Energy Plan, promoting sustainable growth, and reinforcing its position as an attractive destination for energy sector investments.

Foreign investment plays a crucial role in the Peruvian economy, supported by a comprehensive regulatory framework that guarantees investor rights and stability. Investments are welcomed across a wide range of sectors, including telecommunications, electricity, retail, and banking, without restrictions, reinforcing Peru's status as a secure and attractive market for international capital.

GDP BY ECONOMY SECTOR

(Real percentual variations)

	2024*	2025*
	IR.Sep.24	IR.Sep.24
Primary GDP	2.9	3
Agricultural	3.5	3.5
Fishing	22.4	4.9
Metal mining	12	19
Hydrocarbons	3.7	7.1
Manufacture	5.2	3.4
Non primary GDP	3.2	3
Manufacture	2.3	3
Electricity and water	3.1	3
Construction	3.2	3.4
Trade	3.2	2.7
Services	3.3	3
Gross domestic product	3.1	3

Source: BCRP / Energy Investment Guide 2025-2026 (KPMG)
Inflation Report (IR) Sept. 2024



3.0%

2025

Economic activity
growth projection



7.1%

2025

Hydrocarbon sector
growth projection

Promotional areas with the highest gas potential

1. Available technical information.

Using the available technical data from the proposed areas, the 2D (km) and 3D (km²) seismic records, as well as the potential field methods (gravimetric, magnetometric, and magnetotelluric) in kilometers and the number of drilled wells, were reviewed and validated.

2. Geological prospectivity.

Drawing on the understanding of the geological prospectivity of the basins, the presence or indications of hydrocarbon manifestations in the drilled wells were assessed, along with the trends in crude oil types (light, medium, and heavy) based on proven production fields.

3. Existence of Prospects¹, Leads² and Plays³ (PRMS Category)

Building on the understanding of the petroleum systems within the basins, the structures (prospects, leads, and plays) in the proposed areas were assessed and documented in the "Prospective Structures Catalog," along with the estimated volumes of prospective resources.

4. Proximity to reservoirs

Considering the presence of producing reservoirs and/or fields with established reserves and contingent resources.

5. Logistical facilities (Norperuvian Pipeline, pipelines, road network, and navigable rivers).

Logistical infrastructure, including the Norperuvian Pipeline, gas pipelines, road networks, and navigable rivers, is present or in proximity to the selected areas. These facilities encompass pipelines, polyducts, gas pipelines, roadways, air transport routes, and navigable rivers.

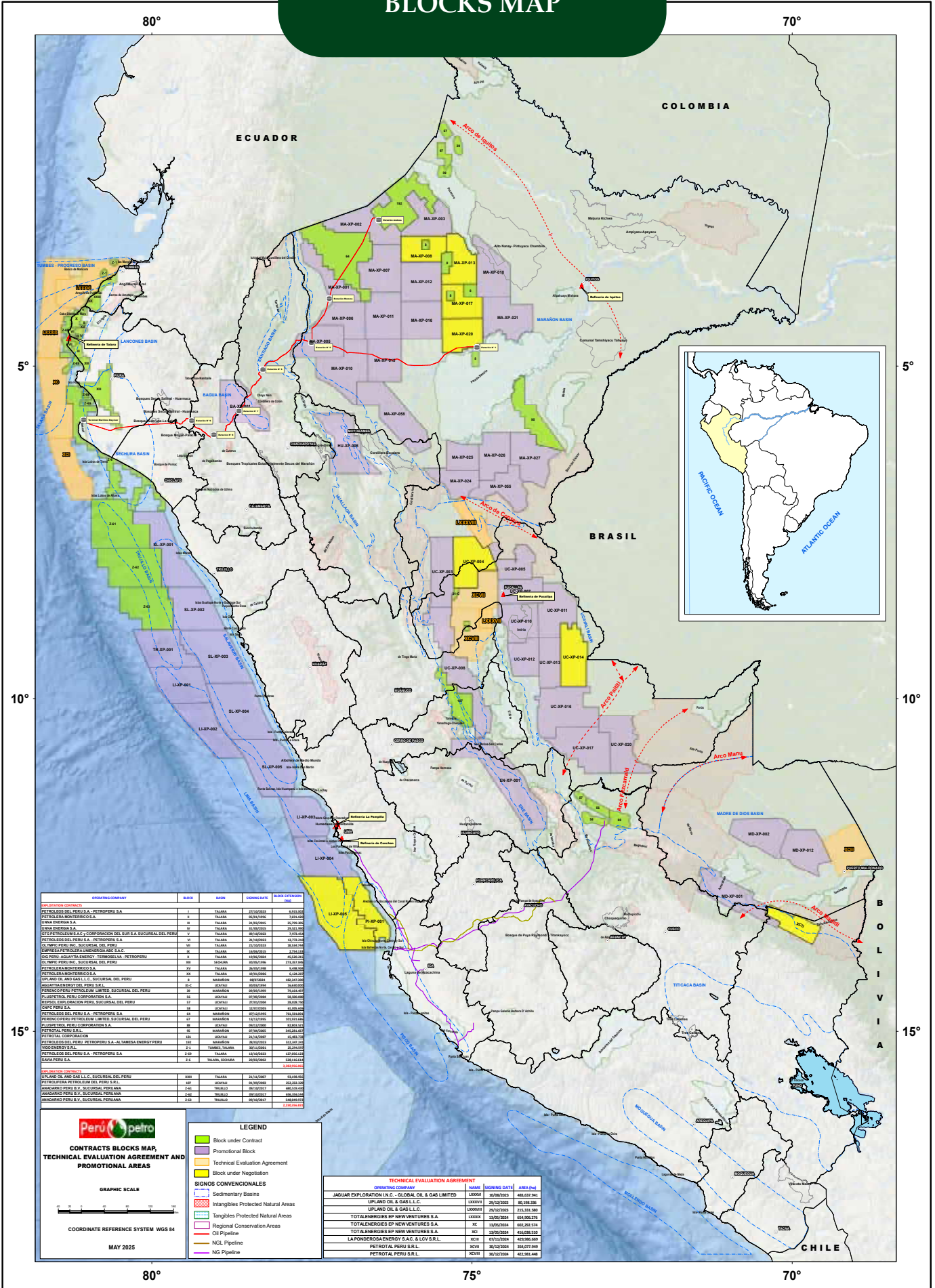
¹ A project associated with a potential accumulation that is sufficiently well defined to represent a viable drilling target.

² A project associated with a potential accumulation that is currently poorly defined and requires more data acquisition and/or evaluation to be classified as a Prospect.

³ A project associated with a prospective trend of potential prospects, but that requires more data acquisition and/or evaluation to define specific Leads or Prospects.



BLOCKS MAP



OPERATING COMPANY	BLOCK	BASEIN	CONTRACT DATE	BLOCK EXTENSION
PERU PETRO S.A. - PETROPERU S.A.	I	YALAPA	10/03/2002	6,103,362
PETROLERA MONTESORO S.A.	II	YALAPA	05/01/2005	1,591,429
YANCA ENERGIA S.A.	III	YALAPA	02/02/2005	2,709,822
YANCA ENERGIA S.A.	IV	YALAPA	02/02/2005	29,202,494
COMPAÑIA PETROLERA Y A.C. CORPORACION DEL SUR S.A. SUCURSAL DEL PERU	V	YALAPA	09/12/2005	2,709,822
PETROLEROS DEL PERU S.A. - PETROPERU S.A.	VI	YALAPA	21/03/2002	18,778,218
OLIMPIO PERU INC. SUCURSAL DEL PERU	VII	YALAPA	21/03/2004	28,819,144
EMPRESA PETROLERA ENERGIA AND S.A.C.	IX	YALAPA	14/06/2005	11,754,103
COMPTON AGUATA ENERGY TENDON S.A. - PETROPERU S.A.	X	YALAPA	08/06/2004	45,830,812
OLIMPIO PERU INC. SUCURSAL DEL PERU	XI	YALAPA	08/06/2004	270,207,474
PETROLERA MONTESORO S.A.	XII	YALAPA	06/01/2005	1,698,000
PETROLERA MONTESORO S.A.	XIII	YALAPA	06/01/2005	11,328,217
UPM INC. AND S.A. SUCURSAL DEL PERU	XIV	YALAPA	06/01/2005	15,847,346
AGUATA ENERGY DEL PERU S.R.L.	XV	YALAPA	08/03/2004	16,420,000
PETROPERU PETROLEROS LIMITES SUCURSAL DEL PERU	XVI	MARAYUPA	02/02/2005	15,244,402
ALUSPECTRA PERU CORPORATION S.A.	XVII	YALAPA	02/02/2005	18,500,000
PERU OIL & GAS PERU S.A. SUCURSAL DEL PERU	XVIII	YALAPA	02/02/2005	20,000,000
UPM PERU S.A.	XIX	YALAPA	02/02/2005	43,686,400
PETROLEROS DEL PERU S.A. - PETROPERU S.A.	XX	MARAYUPA	02/02/2005	78,400,000
PEROPECOR PETROLEROS LIMITES SUCURSAL DEL PERU	XXI	MARAYUPA	02/02/2005	101,051,000
LUSTRAL PERU CORPORATION S.A.	XXII	YALAPA	08/01/2005	69,893,202
PETROLEROS DEL PERU S.A.	XXIII	MARAYUPA	02/02/2005	100,000,000
PETROLEROS DEL PERU S.A. - PETROPERU S.A.	XXIV	MARAYUPA	02/02/2005	115,882,700
PETROLEROS DEL PERU S.A. - PETROPERU S.A. (AL TAMBISA ENERGY PERU)	XXV	MARAYUPA	02/02/2005	112,007,000
HOD ENERGY S.R.L.	XXVI	TUMBISA YALAPA	29/12/2005	20,294,014
PETROLEROS DEL PERU S.A. - PETROPERU S.A.	XXVII	YALAPA	10/03/2002	110,964,000
SAVA PERU S.A.	XXVIII	YALAPA	20/02/2002	108,110,019
PEROPECOR PETROLEROS LIMITES SUCURSAL DEL PERU	XXIX	MARAYUPA	02/02/2005	100,000,000
UPM INC. AND S.A. SUCURSAL DEL PERU	XXX	YALAPA	02/02/2005	10,000,000
PETROLEROS DEL PERU S.A. - PETROPERU S.A.	XXXI	YALAPA	02/02/2005	20,000,000
MARAYUPA PERU S.A. SUCURSAL PERUANA	XXXII	MARAYUPA	02/02/2005	100,000,000
MARAYUPA PERU S.A. SUCURSAL PERUANA	XXXIII	MARAYUPA	02/02/2005	100,000,000
MARAYUPA PERU S.A. SUCURSAL PERUANA	XXXIV	MARAYUPA	02/02/2005	100,000,000
MARAYUPA PERU S.A. SUCURSAL PERUANA	XXXV	MARAYUPA	02/02/2005	100,000,000
MARAYUPA PERU S.A. SUCURSAL PERUANA	XXXVI	MARAYUPA	02/02/2005	100,000,000
MARAYUPA PERU S.A. SUCURSAL PERUANA	XXXVII	MARAYUPA	02/02/2005	100,000,000
MARAYUPA PERU S.A. SUCURSAL PERUANA	XXXVIII	MARAYUPA	02/02/2005	100,000,000
MARAYUPA PERU S.A. SUCURSAL PERUANA	XXXIX	MARAYUPA	02/02/2005	100,000,000
MARAYUPA PERU S.A. SUCURSAL PERUANA	XL	MARAYUPA	02/02/2005	100,000,000
MARAYUPA PERU S.A. SUCURSAL PERUANA	XLI	MARAYUPA	02/02/2005	100,000,000
MARAYUPA PERU S.A. SUCURSAL PERUANA	XLII	MARAYUPA	02/02/2005	100,000,000
MARAYUPA PERU S.A. SUCURSAL PERUANA	XLIII	MARAYUPA	02/02/2005	100,000,000
MARAYUPA PERU S.A. SUCURSAL PERUANA	XLIV	MARAYUPA	02/02/2005	100,000,000
MARAYUPA PERU S.A. SUCURSAL PERUANA	XLV	MARAYUPA	02/02/2005	100,000,000
MARAYUPA PERU S.A. SUCURSAL PERUANA	XLVI	MARAYUPA	02/02/2005	100,000,000
MARAYUPA PERU S.A. SUCURSAL PERUANA	XLVII	MARAYUPA	02/02/2005	100,000,000
MARAYUPA PERU S.A. SUCURSAL PERUANA	XLVIII	MARAYUPA	02/02/2005	100,000,000
MARAYUPA PERU S.A. SUCURSAL PERUANA	XLIX	MARAYUPA	02/02/2005	100,000,000
MARAYUPA PERU S.A. SUCURSAL PERUANA	L	MARAYUPA	02/02/2005	100,000,000

OPERATING COMPANY	BLOCK	CONTRACT DATE	AREA (ha)
JAGUAR EXPLORATION INC. - GLOBAL OIL & GAS LIMITED	LXXXVI	30/06/2002	488,637,961
UPLAND OIL & GAS L.L.C.	LXXXVII	29/12/2002	85,198,138
UPLAND OIL & GAS L.L.C.	LXXXVIII	29/12/2002	215,101,985
TOTAL ENERGIES EP NEW VENTURES S.A.	LXXXIX	13/02/2004	154,506,276
TOTAL ENERGIES EP NEW VENTURES S.A.	XC	13/02/2004	402,202,114
TOTAL ENERGIES EP NEW VENTURES S.A.	XCI	13/02/2004	416,028,120
LA FONDSOSA ENERGY S.A.C. & LCV S.R.L.	XCII	02/11/2004	402,000,000
PETROLEROS DEL PERU S.R.L.	XCIII	26/12/2004	554,077,940
PETROLEROS DEL PERU S.R.L.	XCIV	30/12/2004	402,000,000

Perú petro

CONTRACTS BLOCKS MAP, TECHNICAL EVALUATION AGREEMENT AND PROMOTIONAL AREAS

LEGEND

- Block under Contract
- Promotional Block
- Technical Evaluation Agreement
- Block under Negotiation

SIGNOS CONVENCIONALES

- Sedimentary Basins
- Intangibles Protected Natural Areas
- Tangibles Protected Natural Areas
- Regional Conservation Areas
- Oil Pipeline
- NGL Pipeline
- NG Pipeline

GRAPHIC SCALE

COORDINATE REFERENCE SYSTEM WGS 84

MAY 2025



AVAILABLE DATA

01 AREA

HUALLAGA basin

Exploratory Well: 1 (1991)
Gravimetry: 2,803 Km
Magnetometry: 3,256 Km
2D Seismic: 2,282 Km (1990-1998)



13 AREAS

UCAYALI basin

Exploratory Wells: 79 (1938-2017)
Gravimetry: 83,176 Km
Magnetometry: 130,516 Km
2D Seismic: 28,810 Km (1973-2015)
3D Seismic: 3,201 Km² (2002-2014)

03 AREAS

MADRE DE DIOS basin

Exploratory Wells: 7 (1975-2014)
Gravimetry: 14,212 Km
Magnetometry: 31,627 Km
2D Seismic: 8,272 Km (1973-2010)
Magnetotellurics: 2 lines with 156
stations (2021)



PROSPECTIVE RESOURCES

01 AREA

HUALLAGA basin

5 Prospects: 279 MMSTB
16 Leads: 3,876 MMSTB + 2.6 TCF
Total: 4,155 MMSTB + 2.6 TCF
(2U) (Unrisked)



13 AREAS

UCAYALI basin

34 Prospects: 7,876 MMSTB + 2.6
TCF + 60 MMSTB (Condensate)
112 Leads: 5,177 MMSTB + 7.6 TCF
+ 168 MMSTB (Condensate)
Total: 13,053 MMSTB + 10.2 TCF +
228 MMSTB (Condensate)
(2U) (Unrisked)

03 AREAS

MADRE DE DIOS basin

06 Prospects: 5.7 TCF + 179
MMSTB (Condensate)
21 Leads: 14.7 TCF + 142 MM-
STB (Condensate)
Total: 20.4 TCF + 321 MMSTB
(Condensate) (2U) (Unrisked)



BASIN CHARACTERISTICS



UCAYALI

Basin Type: Foreland Basin

Basin Area: 14 MM Ha.

Source Rocks: Ambo Gr (Mississipian) - Type II-III

Ene Shale (Permian) I-II

Reservoir Rocks: Cretaceous (Vivian Fm, Upper Nia Unit), Permian (Lower Nia Unit and Ene-Noi Unit)

Fluid Type/ °API: Gas, 31° API in Block 31-C, 45.2° API in Block 131, 34°API in Block 107 and 61.6°-62.3° in Block 57.



HUALLAGA

Basin Type: Foreland Basin (Fold Thrust Belts)

Basin Area: 2 MM Ha

Source Rocks: Jurassic (Aramachay Fm.) - Type II & Cretaceous (Raya Fm.) Type II

Reservoir Rocks: Cretaceous (Cushabatay Fm, Agua Caliente Fm & Vivian Fm) Jurassic (Pucara Gp.)

Fluid Type/ °API: Shanusi Seep 13.9°API, Domo Tiraco Seep 20.5° API, Chazutayacu 19° API, Callanayacu 34.9°API.



MADRE DE DIOS

Basin Type: Foreland Basin

Basin Area: 7.5 MM Ha.

Source Rocks: Cabanillas (Devonian) & Ambo Gr (Mississipian) - Type II-III, Ene Shale (Permian) I-II

Reservoir Rocks: Cretaceous (Vivian Fm, Upper Nia Unit), Permian (Lower Nia Unit and Ene-Noi Unit)

Fluid Type/ °API: Gas and 55°API Condensate in Candamo-IX and 51°API in Pariamanu-IX



UCAYALI BASIN

The **13 selected areas** are located in the central rain forest of Peru. Geologically, this area is named as Ucayali basin which is one of the sub-andean foreland basins, with an area of 105,000 km².

The Ucayali Basin is located in the central rainforest of Peru, spans the departments of Ucayali, Huánuco, and Cusco. It is part of the sub-Andean foreland system, covering approximately 105,000 km² with sedimentary sequences up to 8,000 meters thick.

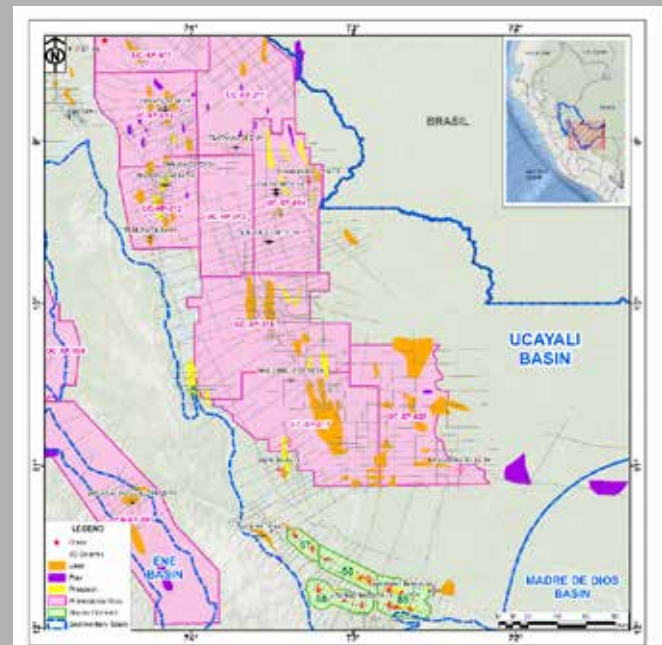
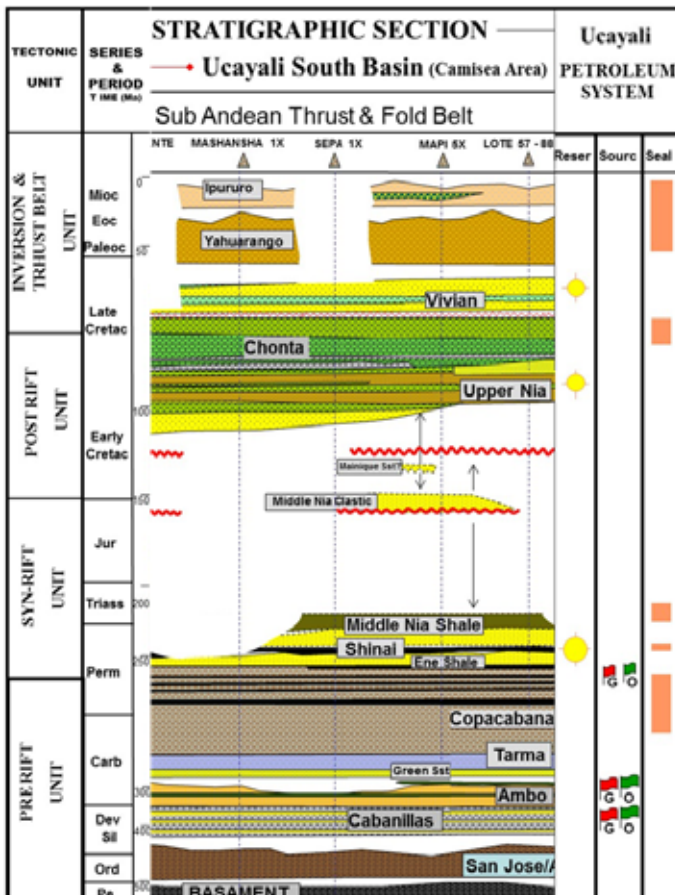
The basin hosts proven petroleum systems from the Paleozoic (Ene-Mainique) and Triassic-Jurassic (Pucará-Vivian) periods. Since the discovery of the Agua Caliente field in 1939, 77 exploratory wells have been drilled, leading to 15 field discoveries, including the major Camisea discovery in 1984.

Exploration activities include 28,810 km of 2D seismic, 3,201 km² of 3D seismic, and 79 exploratory wells, identifying 34 prospects and 112 leads. Prospective resources (2U) (Unrisked) are estimated at 13,053 MMSTB of oil, 10.2 TCF of gas, and 228 MMSTB of NGLs.

As of December 2023, cumulative production reached 7.6 MMSTB of oil, 536.7 MMSTB of NGLs, and 7.1 TCF of gas. The basin holds 2P reserves of 1.6 MMSTB of oil, 127.9 MMSTB of NGLs, and 8.7 TCF of gas, along with 2C contingent resources of 163.7 MMSTB of NGLs and 4 TCF of gas. Technical evaluations have identified 13 promotional areas for future exploration.

PETROLEUM SYSTEM

Source Rock	Ambo Gr (Mississippian) - Type II-III Ene Shale (Permian) I-II
Reservoir	Cretaceous (Vivian Fm, Upper Nia Unit), Permian (Lower Nia Unit and Ene- Noi Unit)
Seal	Lower Red Beds (Tertiary), Chonta Shale Unit, Middle Nia Shale Unit (Cretaceous), Ene Shale Unit, Copacabana Gr (Permian)
Trap	Structural and Stratigraphic traps
Generation	Generation before and after traps formation Presence of Gas and condensate in whole area
Migration	Through fault (& Carrier beds)





MADRE DE DIOS BASIN

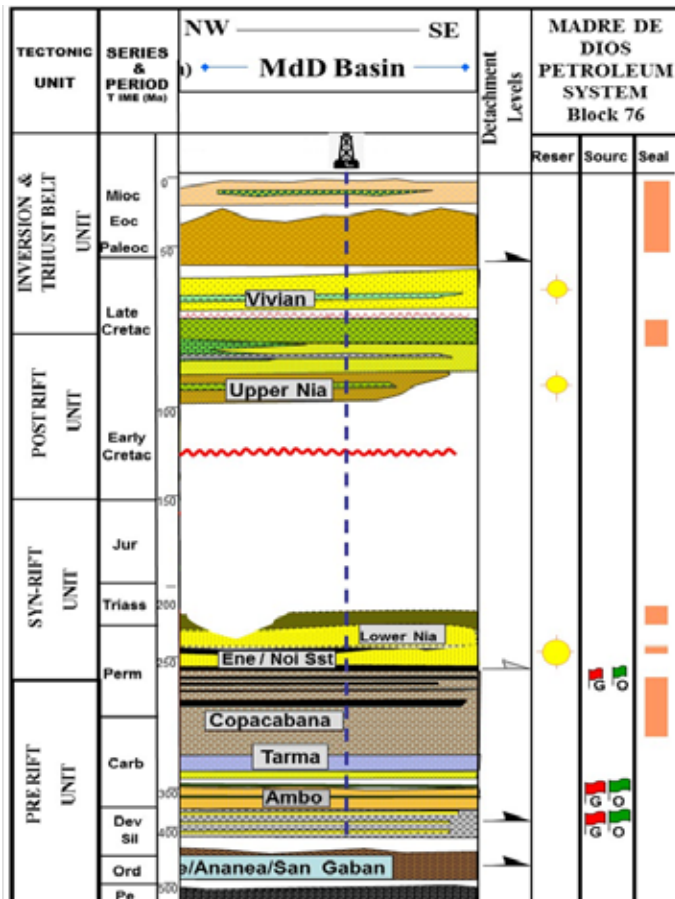
The **3 selected areas** are located in the southern rain forest of Peru. Geologically, this basin is one of the sub-andean foreland basins with a prospective area of 43,000 km².

The Madre de Dios Basin is located in the southern rainforest of Peru, covering parts of the Madre de Dios, Puno, and Cusco departments. Geologically, it forms part of the sub-Andean foreland system, encompassing a prospective area of approximately 43,000 km² with a sedimentary fill of up to 5,000 meters. It is bounded to the north by the Ucayali Basin (delimited by the Manu Arch), to the west by the Eastern Cordillera, to the east by the Bolivian border, and to the south by the Madidi Arch.

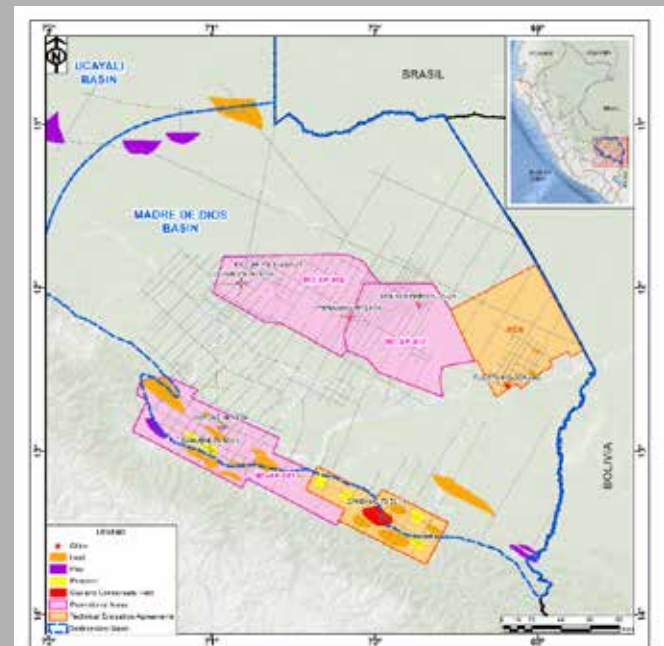
The basin is characterized by a series of thrust faults that result in the repetition of Paleozoic units over Tertiary strata, forming NW-SE trending anticlines. Two main structural styles with hydrocarbon potential are present: the Fold and Thrust Belt (FTB) and the Foredeep Zone.

Progressive exploration activities carried out by various companies have confirmed the

existence of an active petroleum system, highlighted by the discovery of the Candamo 78-53-1X/ST well (gas and condensate) in 1999, contingent resources (2C) in Candamo Field are estimated at 3.6 TCF of gas and 44.02 MMSTB of NGLs. As a result of technical evaluations, three hydrocarbon exploration areas have been identified within the basin.



PETROLEUM SYSTEM	
Source Rock	Cabanillas (Devonian) & Ambo Gr (Mississippian) - Type II-III Ene Shale (Permian) I-II
Reservoir	Cretaceous (Vivian Fm, Upper Nia Unit), Permian (Lower Nia Unit and Ene-Noi Unit)
Seal	Lower Red Beds (Tertiary), Chonta Shale Unit, Middle Nia Shale Unit (Cretaceous), Ene Shale Unit, Copacabana Gr (Permian)
Trap	Structural and Stratigraphic traps
Generation	Generation before and after traps formation Presence of Gas and condensate in whole area
Migration	Through fault (& Carrier beds)





HUALLAGA BASIN



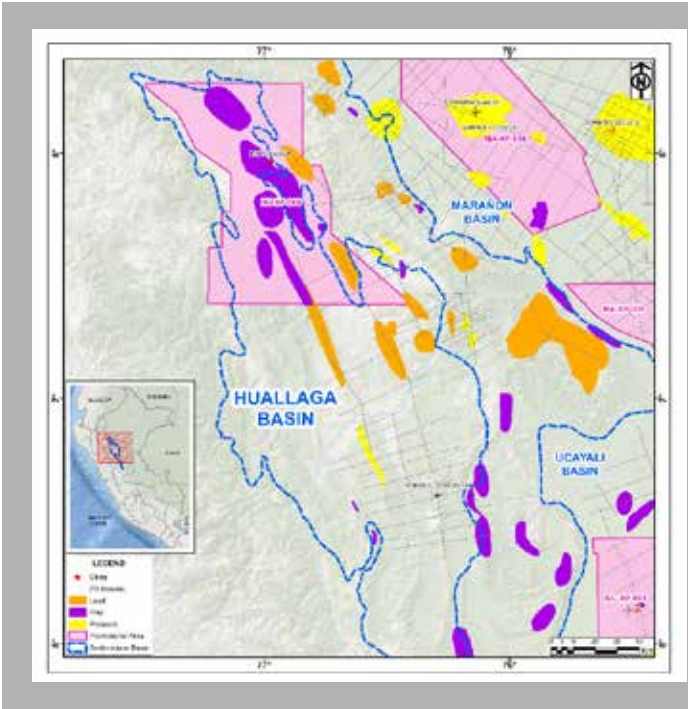
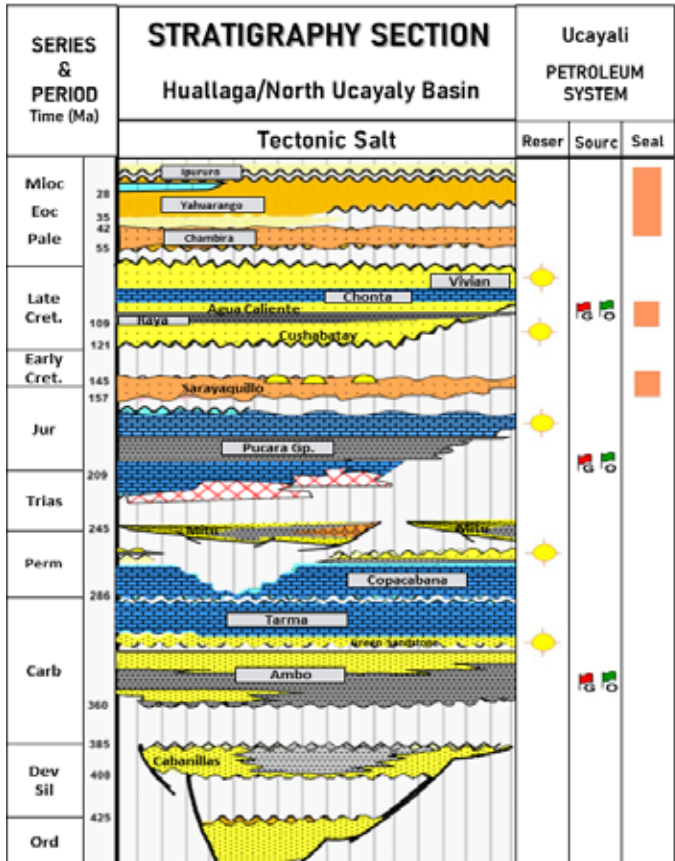
The selected area is located in the north-eastern part of the country, within the department of San Martín. With a surface area of 20,000 km², it is geologically considered an underexplored basin, with only one exploratory well.

The Huallaga Basin is located in the northeastern part of the country, predominantly within the department of San Martín. Geologically, it forms part of the extensive foreland system but is distinguished by unique features, including abundant oil seeps with 34° API light crude oil and numerous outcrops of salt domes.

Further detailed seismic acquisition and subsurface analysis are required to better delineate prospective areas and understand the role of salt dynamics in hydrocarbon entrapment. As a result of technical evaluations, one hydrocarbon promotional area has been identified within the Huallaga Basin.

Historically, exploration in the Huallaga Basin has been guided by structural models based on fold and thrust belt (FTB) tectonics. However, more recent geological studies suggest that much of the basin's structural configuration results from classic salt tectonics, primarily developed during the Jurassic period, independent of compressional tectonic regimes. This salt-driven deformation has generated complex trap geometries, offering significant, yet underexplored, hydrocarbon potential. The presence of surface hydrocarbon manifestations and salt structures provides strong evidence of an active petroleum system.

PETROLEUM SYSTEM	
Source Rock	Jurassic (Aramachay Fm.) - Type II & Cretaceous (Raya Fm.) Type II
Reservoir	Cretaceous (Cushabatay Fm, Agua Caliente Fm & Vivian Fm) Jurassic (Pucara Gp.)
Seal	Lower Red Beds (Tertiary), Chonta Shale Unit, Raya (Cretaceous) Pucara Gp. (Triassic–Jurassic)
Trap	Structural and Stratigraphic traps
Generation	Before and after traps formation Presence of oil and Gas
Migration	Lateral & vertical



Vilma Ruiz Burneo
Promotion Executive
vruiz@perupetro.com.pe



Alan Patrocinio Flores
Promotion and Contracting Manager
apatronicio@perupetro.com.pe



Asaid Bandach Gallegos
Technical and Information Resources Manager
abandach@perupetro.com.pe



Contact us

Meet our Investor Site

www.UpstreamOpportunities.pe

Here you can find our Promotional Information, as well as a variety of brochures, Perú's oil & gas investment guide, Open Acreage for exploration, Next Bidding Rounds, PERUPETRO'S Legal Framework, Technical Information, and more!



You can also find us on

-  promotion@perupetro.com.pe
-  www.perupetro.com.pe
-  Perupetro (oficial)
-  PERUPETRO OFICIAL

